

\$788,800 - 5220 21 Street Sw, Calgary

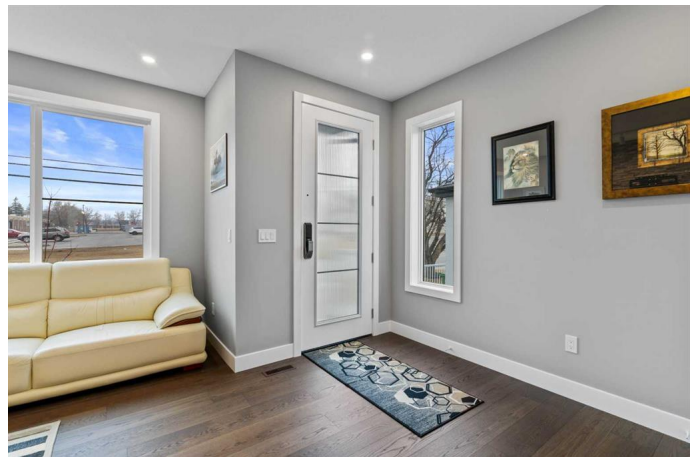
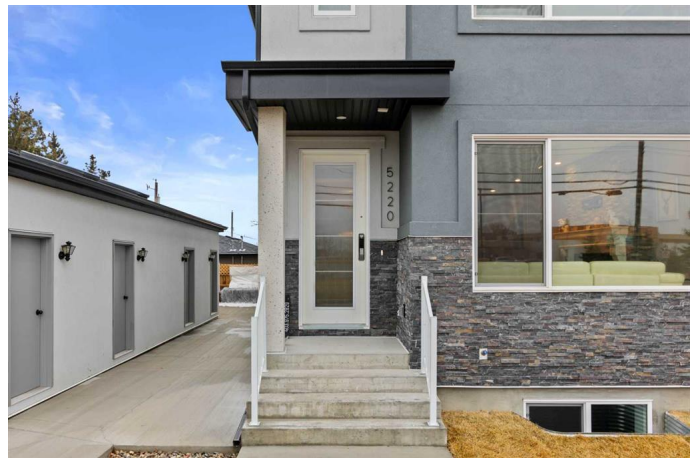
MLS® #A2208080

\$788,800

5 Bedroom, 4.00 Bathroom, 1,790 sqft
Residential on 0.00 Acres

North Glenmore Park, Calgary, Alberta

5220 21 St SW, Calgary | 1,780 Sq Ft | 5 Bedrooms | 3.5 Baths | Detached Garage | Discover modern luxury in the heart of North Glenmore Park, one of Calgary's most coveted and affluent communities. This brand-new, spacious end-unit townhouse blends elegance with functionality, offering 1,780 sq ft of meticulously designed living space across three levels. Perfectly positioned on a quiet, tree-lined street, this home grants walking access to top-rated schools, the serene Glenmore Reservoir, and vibrant amenities—all while being moments from major transport routes, shopping, and dining. Step into an expansive open-concept layout where natural light floods the living, dining, and chef-inspired kitchen areas. Entertain effortlessly with sleek quartz countertops, premium stainless steel appliances, and ample cabinetry. Gather around the cozy fireplace in the living room, creating a warm ambiance for winter evenings with loved ones. Retreat to the private upper level featuring three spacious bedrooms, including a tranquil primary suite with a spa-like ensuite bathroom. Two additional bedrooms share a pristine main bath, while the convenience of upper-floor laundry adds practicality to daily life. Maximize versatility in the fully developed lower level, complete with two additional bedrooms, a full bathroom, and a bright open living area—ideal for guests, a home office, or a media room. Upgrades & Features: Engineered hardwood



flooring throughout main and upper levels.
Modern finishes: granite counters, custom
cabinetry, and designer lighting. Single
detached garage?+ additional visitor parking.
Quiet end-unit location with enhanced privacy.
Energy-efficient design for year-round comfort.
This home caters to?young professionals,
growing families, or those seeking to downsize
without sacrificing space or style. Enjoy
proximity to parks, elite schools, Glenmore
Athletic Park, and the bustling shops of Signal
Hill and Westhills. Seize this rare opportunity
to own a turnkey residence in a prime Calgary
community. Schedule your private tour today
and experience refined living in North
Glenmore Park! Your dream homeâ€”where
luxury meets location.

Built in 2024

Essential Information

MLS® #	A2208080
Price	\$788,800
Bedrooms	5
Bathrooms	4.00
Full Baths	3
Half Baths	1
Square Footage	1,790
Acres	0.00
Year Built	2024
Type	Residential
Sub-Type	Row/Townhouse
Style	2 Storey
Status	Active

Community Information

Address	5220 21 Street Sw
Subdivision	North Glenmore Park
City	Calgary
County	Calgary

Province	Alberta
Postal Code	T3E 1S1

Amenities

Amenities	Other, Visitor Parking
Parking Spaces	1
Parking	Single Garage Detached
# of Garages	1

Interior

Interior Features	Bar, Built-in Features, Closet Organizers, Double Vanity, High Ceilings, Kitchen Island, No Animal Home, No Smoking Home, Open Floorplan, Walk-In Closet(s)
Appliances	Dishwasher, Dryer, Garage Control(s), Gas Range, Refrigerator, Washer
Heating	Forced Air, Natural Gas
Cooling	None
Fireplace	Yes
# of Fireplaces	1
Fireplaces	Electric
Has Basement	Yes
Basement	Finished, Full

Exterior

Exterior Features	Private Entrance, Private Yard, Barbecue
Lot Description	Back Yard, Landscaped
Roof	Asphalt Shingle
Construction	Stone, Stucco, Wood Frame
Foundation	Poured Concrete

Additional Information

Date Listed	April 3rd, 2025
Days on Market	12
Zoning	R-CG

Listing Details

Listing Office	Century 21 Bravo Realty
----------------	-------------------------

Data is supplied by Pillar 9â„¢ MLSÂ® System. Pillar 9â„¢ is the owner of the copyright in its MLSÂ® System. Data is deemed reliable but is not guaranteed accurate by Pillar 9â„¢. The trademarks MLSÂ®, Multiple Listing ServiceÂ® and the associated logos are owned by The Canadian Real Estate Association (CREA) and identify the quality of services provided by real estate professionals who are members of CREA. Used under license.