

# \$242,500 - 1205 Windsor, Penhold

MLS® #A2206612

## \$242,500

1 Bedroom, 2.00 Bathroom, 867 sqft  
Residential on 0.11 Acres

Park Place, Penhold, Alberta

Welcome to 1205 Windsor Avenue, the perfect opportunity to step into homeownership, at an incredible price point. This home is cozy and has ton's of charm. Originally being used as a church, this home was moved onto a block foundation and has been revitalized, with a ton of updates and upgrades! Stepping into the basement, you will find that it is waiting for your personal touch!

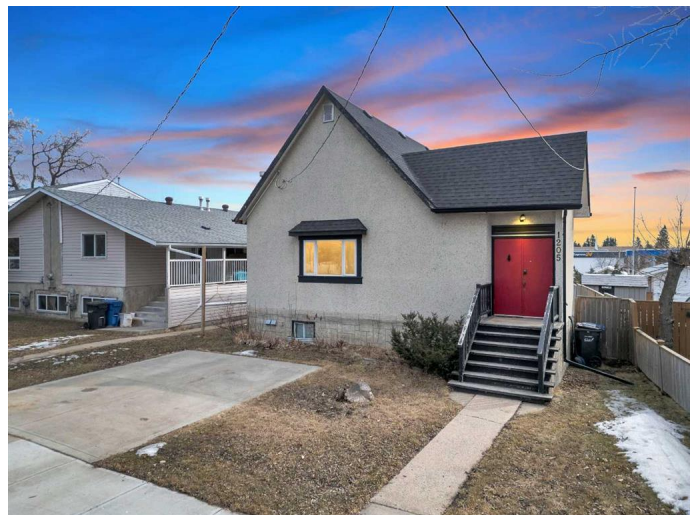
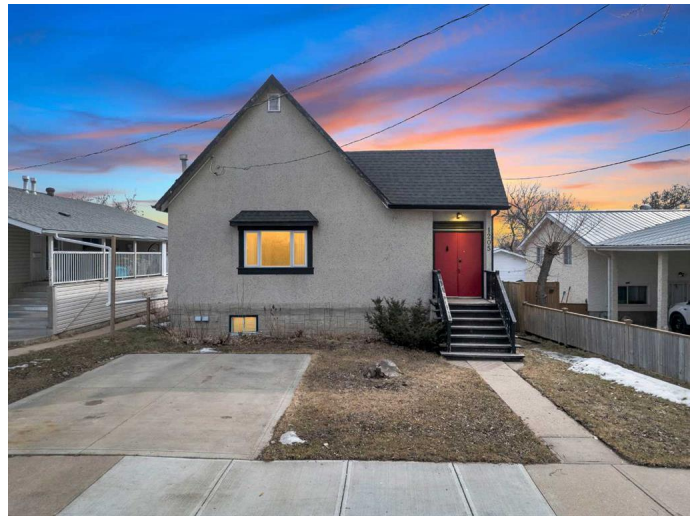
Built in 1960

### Essential Information

MLS® #	A2206612
Price	\$242,500
Bedrooms	1
Bathrooms	2.00
Full Baths	2
Square Footage	867
Acres	0.11
Year Built	1960
Type	Residential
Sub-Type	Detached
Style	Bungalow
Status	Active

### Community Information

Address	1205 Windsor
Subdivision	Park Place
City	Penhold



County	Red Deer County
Province	Alberta
Postal Code	T0M 1R0

### **Amenities**

Parking Spaces	2
Parking	Driveway, Parking Pad, Off Street

### **Interior**

Interior Features	Separate Entrance, Vinyl Windows
Appliances	Dishwasher, Electric Stove, Microwave, Refrigerator, Washer/Dryer
Heating	Forced Air
Cooling	None
Has Basement	Yes
Basement	Exterior Entry, Full, Unfinished

### **Exterior**

Exterior Features	Other
Lot Description	Back Yard
Roof	Shingle
Construction	Stucco
Foundation	Block

### **Additional Information**

Date Listed	March 28th, 2025
Days on Market	4
Zoning	R2

### **Listing Details**

Listing Office	eXp Realty
----------------	------------

Data is supplied by Pillar 9â„¢ MLSÂ® System. Pillar 9â„¢ is the owner of the copyright in its MLSÂ® System. Data is deemed reliable but is not guaranteed accurate by Pillar 9â„¢. The trademarks MLSÂ®, Multiple Listing ServiceÂ® and the associated logos are owned by The Canadian Real Estate Association (CREA) and identify the quality of services provided by real estate professionals who are members of CREA. Used under license.