

\$749,999 - 40 Thornaby Crescent Nw, Calgary

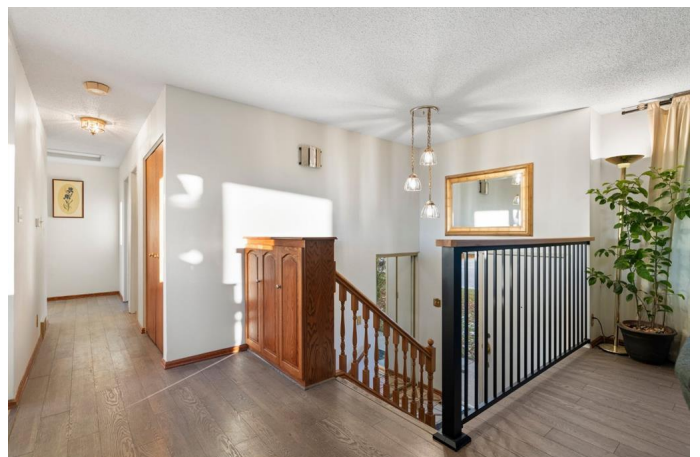
MLS® #A2206569

\$749,999

4 Bedroom, 3.00 Bathroom, 1,240 sqft
Residential on 0.14 Acres

Thornccliffe, Calgary, Alberta

AMAZING VIEW & LOCATION This 2367.54 sq/ft dev Walkout BI-LEVEL is Clean & Simple, Freshly painted & Delivers a panoramic City lights view of the skyline, All the way from east-west. Stunning sun rises as the first light comes over the horizon painting the sky w/vibrant colors. The sun moves across the skyline all day & keeps backyard sunny. Youâ€™ll never miss a super moon or blue full moon! They sit bigger than life outside in the window. Located in established neighborhood w/large tree lined roads. Neighborhood utility lines are buried underground giving an openness to the views from the house & the neighborhood. Enjoy superior road services in this few block area of Thornccliffe. Property taxes have stayed low in comparison to other neighborhoods. The house has exceptional water pressure. All levels of schools are close but easily avoidable so you donâ€™t get caught up in school drop offs & pickups. WOODBURNING gas start fireplace on mn level & gas switch furnace fireplace downstairs. Bth floors have big windows making winter w/twinkling lights of the city view at night bright & cozy. Oversized fridge. Great house for parties, kids, dogs. Floors are 11 mm manufactured wood w/heavy underlay & ceramic tile. Large, private yard perfect for outdoor gatherings. Freshly painted lower level is above ground w/big windows=bright/doesnâ€™t feel like basement. Provides incredible multi-use potential w/separate entrance, under stairs



storage, covered deck & large backyard w/NEW 6' x 9' cedar shed (storage). Lower level includes bedrm, full bath, kitchenette (fridge/stove/dishwasher), large laundry & living room w/fireplace making it ideal for huge primary bedrm suite, teenagers that want their own living area or extra income. The nighttime view is SPECIAL, watching the moon & planes circle/land at airport (quietly as neighborhood is a no-fly zone) over city lights & downtown. View includes TELUS Sky building w/lighting designs by Douglas Copeland & Calgary Tower. Global Fest & Stampede Fireworks are visible from large (400 sq ft) second floor balcony off kitchen which also covers back yard patio below. Close enough to Nose Hill Park to see tops of hills from living room & you can see sun setting into their peaks. Nose Hill Park is easy walk down street to underground access off Edgerts Park, another 20 acre landscaped park w/paved paths, playgrounds, baseball, soccer fields & off leash zone. R-CG Residential=build unbelievable NEW single detached HOME (60 x 110 lot big enough for 2000 sq ft bungalow w/detached triple garage) Or build 3000+ sq ft 2 storey=best view! Or future side-by-side (duplex) that may include secondary suites w/City Approval. Expansive 60' x 110' lot = endless opportunities. This is an investment in lifestyle and future value! access to downtown in under 15 minutes via Centre Street, while Deerfoot and Crowchild Trails provide seamless commuting options. International Airport is just 10 minutes away. Amazing access to major roadways like Deerfoot & Crowchild.

Built in 1976

Essential Information

| | |
|--------|-----------|
| MLS® # | A2206569 |
| Price | \$749,999 |

| | |
|----------------|-------------|
| Bedrooms | 4 |
| Bathrooms | 3.00 |
| Full Baths | 2 |
| Half Baths | 1 |
| Square Footage | 1,240 |
| Acres | 0.14 |
| Year Built | 1976 |
| Type | Residential |
| Sub-Type | Detached |
| Style | Bi-Level |
| Status | Active |

Community Information

| | |
|-------------|-------------------------|
| Address | 40 Thornaby Crescent Nw |
| Subdivision | Thorncliffe |
| City | Calgary |
| County | Calgary |
| Province | Alberta |
| Postal Code | T2K 5K4 |

Amenities

| | |
|---------|------------|
| Parking | Off Street |
|---------|------------|

Interior

| | |
|-------------------|---------------------------------------------------------------------------------------|
| Interior Features | Ceiling Fan(s), Laminate Counters, Pantry, See Remarks, Storage |
| Appliances | Dishwasher, Dryer, Electric Stove, Range Hood, Refrigerator, Washer, Window Coverings |
| Heating | Forced Air, Natural Gas |
| Cooling | None |
| Fireplace | Yes |
| # of Fireplaces | 2 |
| Fireplaces | Basement, Brick Facing, Gas, Living Room, Mantle, Stone, Wood Burning, Gas Starter |
| Has Basement | Yes |
| Basement | Finished, Full |

Exterior

| | |
|-------------------|------------------------------------------|
| Exterior Features | Balcony, Private Yard |
| Lot Description | Back Lane, Back Yard, Front Yard, Sloped |

| | |
|--------------|----------------------------------------|
| Roof | Asphalt Shingle |
| Construction | Brick, Stucco, Wood Frame, Wood Siding |
| Foundation | Poured Concrete |

Additional Information

| | |
|----------------|------------------|
| Date Listed | March 28th, 2025 |
| Days on Market | 5 |
| Zoning | R-CG |

Listing Details

| | |
|----------------|------------------------|
| Listing Office | Royal LePage Benchmark |
|----------------|------------------------|

Data is supplied by Pillar 9â„¢ MLSÂ® System. Pillar 9â„¢ is the owner of the copyright in its MLSÂ® System. Data is deemed reliable but is not guaranteed accurate by Pillar 9â„¢. The trademarks MLSÂ®, Multiple Listing ServiceÂ® and the associated logos are owned by The Canadian Real Estate Association (CREA) and identify the quality of services provided by real estate professionals who are members of CREA. Used under license.