

\$624,500 - 316 Viewpointe Terrace, Chestermere

MLS® #A2204268

\$624,500

3 Bedroom, 3.00 Bathroom, 2,090 sqft
Residential on 0.08 Acres

Westmere, Chestermere, Alberta

STEPS FROM CHESTERMERE LAKE
DOUBLE ATTACHED GARAGE , plumbed for
natural gas already
UNDEVELOPED BASEMENT BUT HAS SIDE
ENTRANCE FOR SEPERATE ACCESS.
LARGE BACKYARD WITH EXTENDED
PATIO & CEDAR BUILT PERGOLA
INCOPRORATING ROLL DOWN SUN
SCREENS.

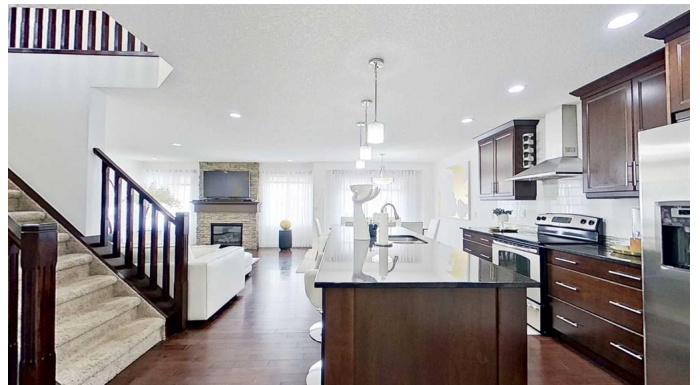
This stunning three-bedroom NO
CONDO-FEE duplex in Chestermere
combines thoughtful design with modern
upgrades in a prime location.

The *MAIN FLOOR* welcomes you with an
elegant foyer, hardwood floors, a huge
versatile home office/den, and a cozy great
room featuring floor to ceiling stone fireplace
with large windows that fill the space with
natural light. The gourmet kitchen is perfect for
entertaining, offering stainless steel
appliances, a huge walk-in pantry,
dark-stained ceiling height cabinetry, and a
spacious granite island.

*UPSTAIRS * The primary retreat boasts
double entry doorway, a walk-in closet and an
ensuite with a tiled half wall glass-door
shower, jetted tub and granite countertops.
Two additional bedrooms, end bathroom with
stone countertops, linen closet a bonus room,
and a convenient beautiful laundry room with
extra storage complete this level.

The basement offers easily +-800 sqf to be
developed in any manner you need.

Secondary income suite or massive family



entertainment space?

Outside, the fully fenced backyard offers an extended patio perfect for entertaining and includes a Cedar built 10x14 pergola that incorporates a toll up sun shade. Established garden.

Located steps from Chestermere Lake, a playzone park steps away from this house, a dog park, walking paths, and bike trails, this beautifully upgraded home offers the storage shed and convenience.

Built in 2014

Essential Information

MLS® #	A2204268
Price	\$624,500
Bedrooms	3
Bathrooms	3.00
Full Baths	2
Half Baths	1
Square Footage	2,090
Acres	0.08
Year Built	2014
Type	Residential
Sub-Type	Semi Detached
Style	2 Storey, Side by Side
Status	Active

Community Information

Address	316 Viewpointe Terrace
Subdivision	Westmere
City	Chestermere
County	Chestermere
Province	Alberta
Postal Code	T1X0T3

Amenities

Parking Spaces	4
Parking	Double Garage Attached, Parking Pad

of Garages 2

Interior

Interior Features Granite Counters, Jetted Tub, Open Floorplan, Pantry, Separate Entrance, Vaulted Ceiling(s)

Appliances Dishwasher, Dryer, Range Hood, Refrigerator, Stove(s), Washer

Heating Fireplace(s), Forced Air, Natural Gas

Cooling None

Fireplace Yes

of Fireplaces 1

Fireplaces Gas

Has Basement Yes

Basement Full, Unfinished

Exterior

Exterior Features Garden, Private Yard

Lot Description Back Yard, Rectangular Lot, Few Trees, Zero Lot Line

Roof Asphalt Shingle

Construction Brick, Vinyl Siding

Foundation ICF Block, Poured Concrete, Brick/Mortar, Wood

Additional Information

Date Listed March 24th, 2025

Days on Market 7

Zoning R-2

Listing Details

Listing Office ComFree

Data is supplied by Pillar 9â„¢ MLSÂ® System. Pillar 9â„¢ is the owner of the copyright in its MLSÂ® System. Data is deemed reliable but is not guaranteed accurate by Pillar 9â„¢. The trademarks MLSÂ®, Multiple Listing ServiceÂ® and the associated logos are owned by The Canadian Real Estate Association (CREA) and identify the quality of services provided by real estate professionals who are members of CREA. Used under license.