

\$320,000 - 35, 5425 Pensacola Crescent Se, Calgary

MLS® #A2201828

\$320,000

4 Bedroom, 2.00 Bathroom, 1,167 sqft

Residential on 0.00 Acres

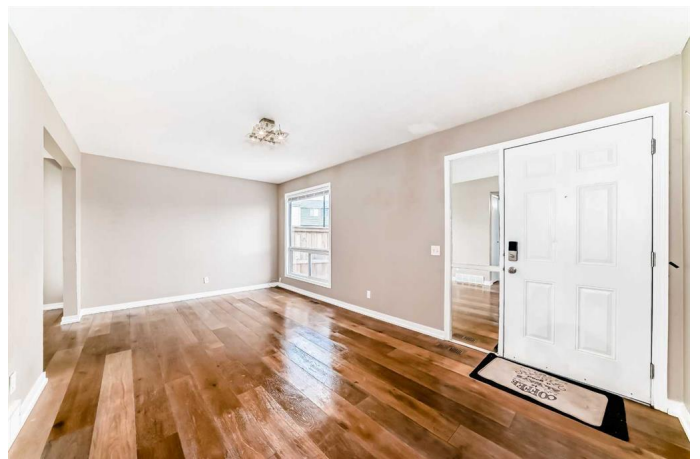
Penbrooke Meadows, Calgary, Alberta

Perfect for First-Time Homebuyers or Investors! This charming home features a spacious living room with large windows that flood the space with natural light, complemented by stylish ENGINEER HARDWOOD flooring on main & upper level, open floor plan. The gourmet kitchen is equipped with stainless steel appliances and offers ample storage. Upstairs, you'll find 3 cozy bedrooms and a 4-piece bathroom. The fully finished basement includes a generous recreation room, an additional bedroom, and convenient laundry facilities. Enjoy your summer BBQs on the large deck in the private backyard. Ideally located near shops, schools, walking paths, and parks, with easy access to Stoney and Deerfoot Trails, and just a 12-minute drive to downtown.

Built in 1969

Essential Information

| | |
|----------------|-----------|
| MLS® # | A2201828 |
| Price | \$320,000 |
| Bedrooms | 4 |
| Bathrooms | 2.00 |
| Full Baths | 1 |
| Half Baths | 1 |
| Square Footage | 1,167 |
| Acres | 0.00 |
| Year Built | 1969 |



| | |
|----------|---------------|
| Type | Residential |
| Sub-Type | Row/Townhouse |
| Style | 2 Storey |
| Status | Active |

Community Information

| | |
|-------------|--------------------------------|
| Address | 35, 5425 Pensacola Crescent Se |
| Subdivision | Penbrooke Meadows |
| City | Calgary |
| County | Calgary |
| Province | Alberta |
| Postal Code | T2A 2G7 |

Amenities

| | |
|----------------|---------|
| Amenities | Parking |
| Parking Spaces | 1 |
| Parking | Stall |

Interior

| | |
|-------------------|--|
| Interior Features | Open Floorplan |
| Appliances | Electric Stove, Range Hood, Refrigerator, Window Coverings |
| Heating | Forced Air, Natural Gas |
| Cooling | None |
| Has Basement | Yes |
| Basement | Finished, Full |

Exterior

| | |
|-------------------|--------------------------|
| Exterior Features | Playground |
| Lot Description | Landscaped |
| Roof | Asphalt Shingle |
| Construction | Vinyl Siding, Wood Frame |
| Foundation | Poured Concrete |

Additional Information

| | |
|----------------|------------------|
| Date Listed | March 26th, 2025 |
| Days on Market | 31 |
| Zoning | M-C1 |

Listing Details

Listing Office

RE/MAX Real Estate (Central)

Data is supplied by Pillar 9â„¢ MLSÂ® System. Pillar 9â„¢ is the owner of the copyright in its MLSÂ® System. Data is deemed reliable but is not guaranteed accurate by Pillar 9â„¢. The trademarks MLSÂ®, Multiple Listing ServiceÂ® and the associated logos are owned by The Canadian Real Estate Association (CREA) and identify the quality of services provided by real estate professionals who are members of CREA. Used under license.