

# \$739,900 - 13 Prominence Path Sw, Calgary

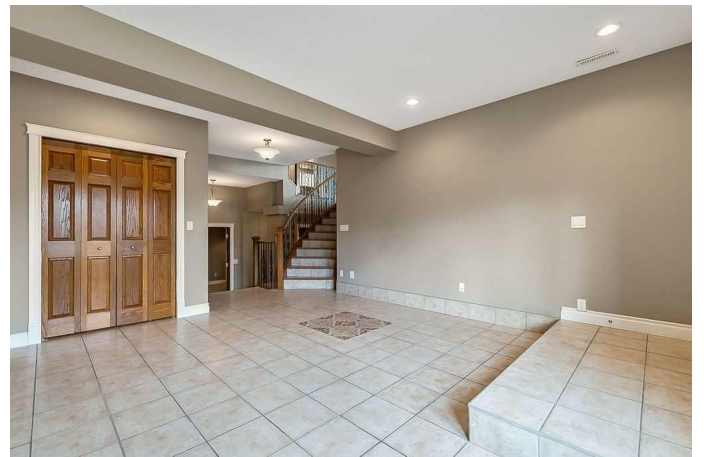
MLS® #A2197616

**\$739,900**

2 Bedroom, 3.00 Bathroom, 1,924 sqft  
Residential on 0.10 Acres

Patterson, Calgary, Alberta

Located in the highly sought-after Condo Development, The Mansions at Prominence Point, this charming 2-bedroom, 3-bathroom home offers a spacious and well-designed layout perfect for modern living. Nestled in the desirable neighborhood of Patterson, this home boasts over 2,600 square feet of developed living space, providing ample room for comfort and entertaining. Main Level: The open-concept main floor is flooded with natural light, creating a bright and inviting atmosphere. It features a cozy living room with a gas fireplace, a large dining area perfect for family gatherings, and a well-equipped kitchen with plenty of cabinet space, a pantry, and expansive countertops for all your culinary needs. Upper Level: The upper level includes a spacious primary bedroom complete with a five-piece ensuite bathroom and a generous walk-in closet. An additional bedroom with built-in closet shelving and a four-piece bathroom provide space for guests or family members. Lower Level: The fully developed lower level offers a large rec room/family room, a designated laundry area with additional storage, and a convenient two-piece bathroom. This level also provides access to the double attached garage, adding extra convenience. Prime Location: Situated in an optimal location, this home is just a 20-minute commute to downtown, with easy access to Stoney Trail (5 minutes), the West Springs amenities (5 minutes), Edworthy Park and the Bow River (10 minutes), and Westhills (15



minutes), ensuring you're close to everything you need while enjoying a peaceful retreat in a well-established community. Don't miss out on this incredible opportunity to own a home in one of the most desirable developments in the area. Schedule your private viewing today!

Built in 1997

### Essential Information

|                |                             |
|----------------|-----------------------------|
| MLS® #         | A2197616                    |
| Price          | \$739,900                   |
| Bedrooms       | 2                           |
| Bathrooms      | 3.00                        |
| Full Baths     | 2                           |
| Half Baths     | 1                           |
| Square Footage | 1,924                       |
| Acres          | 0.10                        |
| Year Built     | 1997                        |
| Type           | Residential                 |
| Sub-Type       | Semi Detached               |
| Style          | 4 Level Split, Side by Side |
| Status         | Active                      |

### Community Information

|             |                       |
|-------------|-----------------------|
| Address     | 13 Prominence Path Sw |
| Subdivision | Patterson             |
| City        | Calgary               |
| County      | Calgary               |
| Province    | Alberta               |
| Postal Code | T3H 2W7               |

### Amenities

|                |                        |
|----------------|------------------------|
| Amenities      | None                   |
| Parking Spaces | 2                      |
| Parking        | Double Garage Attached |
| # of Garages   | 2                      |

## Interior

|                   |  |
|-------------------|--|
| Interior Features | Central Vacuum, Closet Organizers, French Door, Granite Counters, High Ceilings, Jetted Tub, Kitchen Island, No Animal Home, No Smoking Home, Open Floorplan, Storage, Walk-In Closet(s) |
| Appliances        | Other  |
| Heating           | Forced Air   |
| Cooling           | None   |
| Fireplace         | Yes  |
| # of Fireplaces   | 1  |
| Fireplaces        | Gas  |
| Has Basement      | Yes  |
| Basement          | Finished, Full   |

## Exterior

|                   |                        |
|-------------------|------------------------|
| Exterior Features | Lighting, Rain Gutters |
| Lot Description   | Landscaped, Lawn       |
| Roof              | Clay Tile              |
| Construction      | Brick, Wood Frame      |
| Foundation        | Poured Concrete        |

## Additional Information

|                |                     |
|----------------|---------------------|
| Date Listed    | February 28th, 2025 |
| Days on Market | 14                  |
| Zoning         | M-C1                |

## Listing Details

|                |                        |
|----------------|------------------------|
| Listing Office | Royal LePage Solutions |
|----------------|------------------------|

Data is supplied by Pillar 9â„¢ MLSÂ® System. Pillar 9â„¢ is the owner of the copyright in its MLSÂ® System. Data is deemed reliable but is not guaranteed accurate by Pillar 9â„¢. The trademarks MLSÂ®, Multiple Listing ServiceÂ® and the associated logos are owned by The Canadian Real Estate Association (CREA) and identify the quality of services provided by real estate professionals who are members of CREA. Used under license.